



£240,000

Hallam Street, Heaviley, Stockport, SK2 6PT



Warrens
move happy

Before you know the value of your home
know the value of your estate agent.

Contact us to arrange a free valuation.

Trinity House, Newby Road
Hazel Grove, Stockport, SK7 5DA

0161 260 0444
sales@warrensonline.co.uk
www.warrensonline.co.uk

Looking for a characterful home in a convenient area? Something with heritage and charm where history and all the conveniences of modern comforts combine? Prefer not to be involved in an onward chain? No chain here!

Welcome to number 23 Hallam Street, an attractive 19th Century terrace home (built circa 1859) commissioned by Ephraim Hallam (1812-1897) for his senior mill workers, now stands as testament to the areas rich history.

Hallam Street leads to the mill (still standing and occupied) which was originally built by Hallam for his flourishing cotton industry.

Number 23 is welcoming and warm and the heritage of the property is intertwined with mod cons including gas central heating, UPVC double glazing to the rear and the creature comforts of a modern kitchen and bathroom.

Pull up outside the home and marvel at the picture-postcard appearance of this preserved house. Mullion windows and dressed brick work add to the aesthetic appeal of this homes front cover!

Walk up the path to the period front door. Step into the vestibule with its exposed period tiled floor.

A door opens into the lounge, cosy and rustic by way of a feature exposed brick chimney breast which extends to one side and incorporates an arched feature framing the wall. Timber shelving accents the homespun vibe.

The breakfast kitchen is located to the rear of the property. Fashioned in a cottage style, the exposed brick surround houses an inset hob with an oven beneath whilst the mosaic adds a unique and colourful feature sure to be a talking point with guests. A Belfast sink sits neath the window to the rear which frames the view of the rear garden whilst you do the dishes.

Re-trace your steps to the vestibule and head upstairs to the first floor landing. A stained glass window allows borrowed light from the front bedroom to colourfully light the area. There are two good size bedrooms on the first floor along with a fully tiled white modern bathroom suite with a double ended bath for those relaxing soaks.

Outside, there is a small garden frontage. To the rear, you will be impressed by a lovely rear garden with a patio area which extends to a lawn garden with a herringbone brick path. Charming.

Within less than half a mile, Davenport train station is tantalisingly convenient. Just over a mile to Stockport Train Station. Davenport village is minutes away.

We would love to arrange for you to visit.

Council Tax Band: A

EPC: Band D

Tenure: Freehold

Ground Floor

Entrance Vestibule - 4' 6" x 3' 4" (1.39m x 1.04m) The home is accessed via a timber front door into the entrance vestibule.

Living Room - 13' 11" x 12' 8" (4.25m x 3.87m) Situated to the front of the property. Laminate floor. Dado rail. Exposed brick fire place with an ornate hole in the wall. The brick feature extends to one side and incorporates an arch which frames a recess. Windows to the front. Radiator.

Breakfast Kitchen - 7' 11" x 14' 9" (2.42m x 4.52m) Presented in a country fashion including a Belfast sink (which sits beneath a window overlooking the charming rear garden).

Wall, base and drawer units. Space for washing machine. Space for an under-counter fridge. Space for an under-counter freezer. Work surfaces. Tiled splash backs.

Period door opening to the rear garden. The door features a leaded light. Tiled floor.

Exposed brick feature housing the inset hob. Mosaic backing - a real talking point. Electric oven. Space for a dining table. Under stairs storage area.

First Floor



Warrens
move happy

Before you know the value of your home
know the value of your estate agent.

Contact us to arrange a free valuation.

Trinity House, Newby Road
Hazel Grove, Stockport, SK7 5DA

0161 260 0444
sales@warrensonline.co.uk
www.warrensonline.co.uk

Landing - 2' 7" x 3' 4" (0.8m x 1.05m) Access to the two bedrooms and the bathroom/ w.c.
Stained window over the stairs (cascading borrowed light from the front bedroom).

Bedroom - 12' 0" x 16' 3" (3.66m x 4.96m) A surprisingly good sized bedroom. Ornate cast iron fire place set into the corner. Period leaded light. recess for wardrobes. Two windows to the front elevation. Dado rail. Radiator.

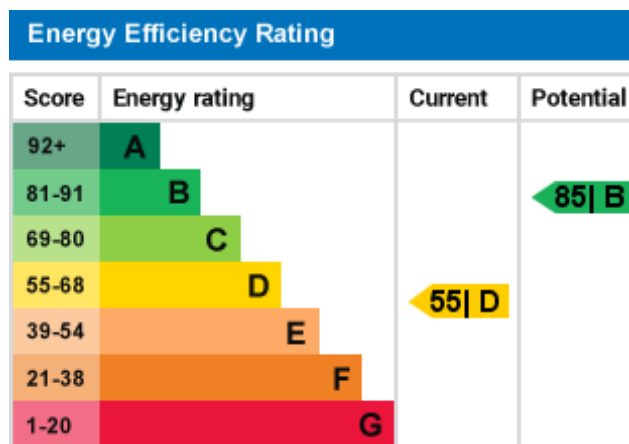
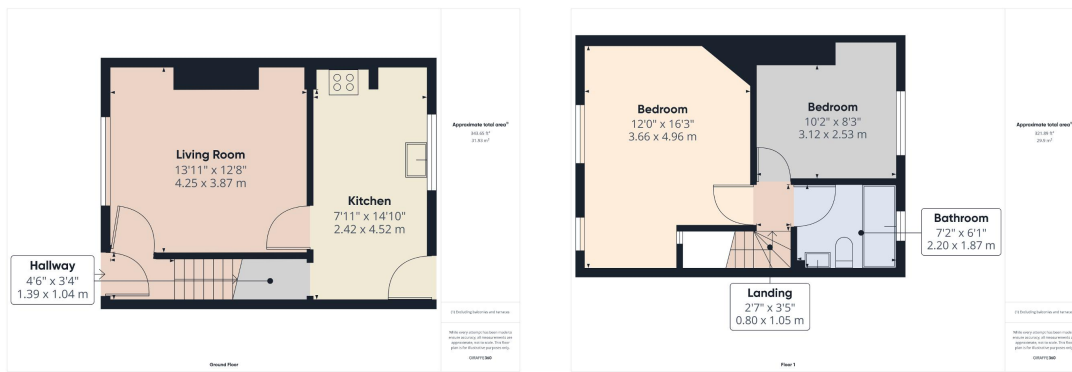
Bedroom - 10' 2" x 8' 3" (3.12m x 2.53m) Another good sized room. Radiator. UPVC double glazed window to the rear.

Bathroom/W.C. - 7' 2" x 6' 5" (2.2m x 1.97m) With a modern white suite comprising a double ended panelled bath, low level w.c. and a wash hand basin. Fully tiled walls with a decorative tile border. Chrome effect heated towel rail. UPVC double glazed window to the rear elevation.

Exterior

Outside - Outside, there is a small garden frontage. To the rear, you will be impressed by a lovely rear garden with a patio area which extends to a lawn garden with a herringbone brick path. Charming.





Please note it is not our company policy to test services, heating systems and domestic appliances, therefore we cannot verify that they are in working order. Prospective purchasers are advised to obtain verification from their solicitors and/or surveyors.

For more details please call us on **0161 260 0444** or send an email to enquiries@warrensonline.co.uk.



Warrens
move happy

Before you know the value of your home
know the value of your estate agent.

Contact us to arrange a free valuation.

Trinity House, Newby Road
Hazel Grove, Stockport, SK7 5DA

0161 260 0444
sales@warrensonline.co.uk
www.warrensonline.co.uk